

# PC POLES

## DESCRIPTION

Type of Poles

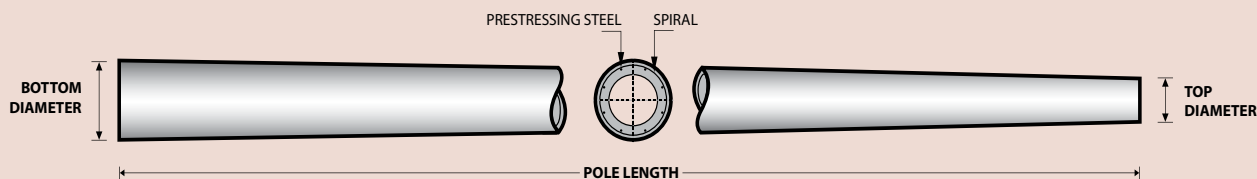
- DPC Poles : Prestress Concrete Poles for Electrical Distribution Line
- TPC Poles : Prestress Concrete Poles for Telecommunication Line
- SDPC Poles : Segmental Prestress Concrete Poles for Electrical Distribution Line
- STPC Poles : Segmental Prestress Concrete Poles for Electrical Transmission Line

System of Joints : Bolt and nuts for SDPC Poles  
Welding at steel joint plate for STPC Poles

## DESIGN & MANUFACTURING REFERENCE

Design	SPLN D3.019-2 : 2013	Prestressed Concrete Poles for Distribution Line
	SPLN 121 :1996	Prestressed Concrete Poles for Transmission Line
	STEL - 2001 ver.2	Telecommunication Specification - Prestressed Concrete Spun Poles
	SNI 2847 - 2013	Indonesian Standard Code for Concrete
Manufacturing	WB - PCP - PS - 05	Production Manufacturing Procedure

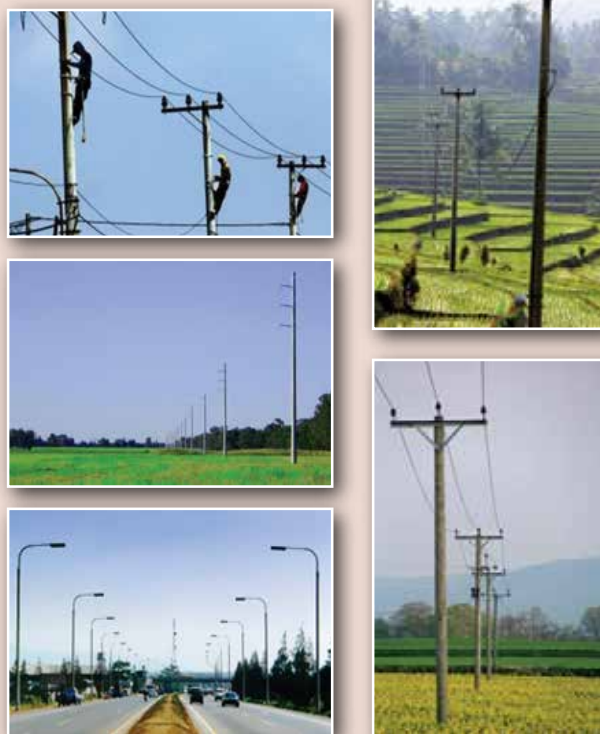
## PC POLES | PRODUCT SHAPE & SPECIFICATION



Concrete Compressive Strength  $f_c' = 42 \text{ MPa}$  (Cube 500 kg/cm<sup>2</sup>)

Class	Type		Outside Diameter		Weight (kg/pcs)
	Length (m)	Horizontal Load (daN)	Top (mm)	Bottom (mm)	
<b>Electrical Distribution Line PC Poles</b>					
DPC	7	100	157	202	300
DPC	9	100	157	277	580
		200	157	277	580
		350	190	310	710
DPC	11	200	190	337	1,050
		350	190	337	1,050
		500	190	337	1,050
DPC	12	200	190	350	1,230
		350	190	350	1,230
		500	190	350	1,230
DPC	13	350	190	363	1,410
		500	190	363	1,410
DPC	14	350	190	377	1,670
		500	190	377	1,670
<b>Telecommunication Line PC Poles</b>					
TPC	7	150	124	202	300
TPC	9	150	124	224	430
<b>Segmental Electrical Distribution Line PC Poles</b>					
SDPC	7	100	124	202	300
SDPC	9	100	157	277	580
		200	157	277	580
SDPC	11	200	190	337	1,050

## PRODUCT APPLICATION



Concrete Compressive Strength  $f_c' = 50 \text{ MPa}$  (Cube  $600 \text{ kg/cm}^2$ )

Class	Type		Outside Diameter		Weight (kg/pcs)
	Length (m)	Horizontal Load (daN)	Top (mm)	Bottom (mm)	
<b>Segmental Electrical Transmission Line PC Poles</b>					
STPC	17	800	245	500	3,030
		1,000	290	545	3,650
		1,200	290	545	3,650
STPC	18	800	245	515	3,320
		1,000	290	560	3,990
		1,200	290	560	3,990
STPC	19	800	245	530	3,630
		1,000	290	575	4,350
		1,200	290	575	4,350
STPC	22	800	245	575	4,650
		1,000	290	620	5,510
		1,200	290	620	5,510
STPC	23	800	245	590	5,010
		1,000	290	635	5,930
		1,200	290	635	5,930
STPC	25	800	245	620	5,820
		1,000	290	665	7,040
		1,200	290	665	7,040
STPC	27	800	245	650	6,670
		1,000	290	695	7,800
		1,200	290	695	7,800
STPC	30	800	245	695	8,100
		1,000	290	740	9,400
		1,200	290	740	9,400

## TRANSMISSION PC POLES APPLICATION



## POLES FOUNDATION TYPE



Embedded foundation



Base Plate foundation

## POLES INSTALLATION METHOD



Installation by Lifting Crane



Installation by Box Equipment

